

# DISABILITY SERVICE ORGANISATIONS



National  
Disability  
Practitioners

## Recognise & develop your staff with NDP

A skilled and informed workforce is crucial for the NDIS. As a disability service organisation, you can support, recognise and reward your staff through a group NDP subscription.

The NDP community consists of more than 10,000 passionate and professional individuals. NDP is committed to informing, developing and inspiring the Australian disability workforce, so that they can deliver quality services and life opportunities for the people they support.

## Invest in an NDP subscription for your staff

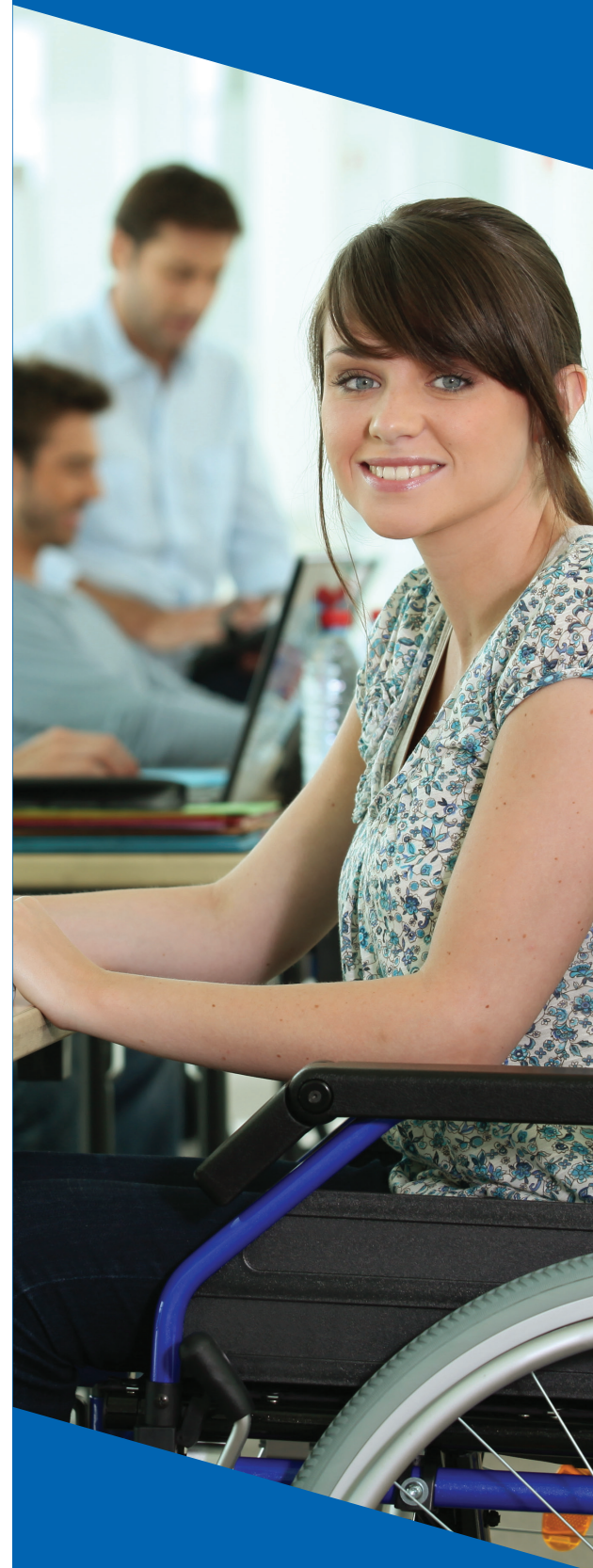
**5-100 staff** - \$20 per person (more than 50% off the standard NDP subscription fee!)

**400 or more staff** - Capped at just \$8,000 (excl gst)

## SPECIAL OFFER:

**Sign up now and get bonus months!**

Membership extended to 30 June 2020 at no extra cost.



[www.ndp.org.au](http://www.ndp.org.au)



## NDP membership provides many benefits:

### NEWS

- Know how changes in the sector will affect you.
- Latest NDIS news updates and information tailored for all staff levels.
- Easy-to-digest formats (e.g. fact sheets, fortnightly newsletters, video content)
- NDPtv episodes - videos of sector experts and practitioners sharing their NDIS experience and learnings.

### LEARNING HUB

- Encourage staff to upskill themselves and progress their careers.
- Access to hundreds of resources - online learning, webinars, discounted face-to-face workshops, research-based action guides.
- Continuing Professional Development (CPD) program to inspire and recognise staff's learning.

### CONNECTIONS

- Network, collaborate and learn from more than 10,000 disability practitioners across Australia.
- Connect with others via our 'speed dating' networking events, one-on-one mentoring programs, virtual conferences, Communities of Practice, NDP social media channels and Ambassador Program.

### NDP ADVANTAGE

- Keep it balanced - Work, rest and play.
- Range of exclusive discounts (e.g. movie vouchers, gym membership, experiences, gift cards, car rentals and shopping).

**For further information**, contact NDP's Executive Office, Eddie Ripard at [eddie.ripard@ndp.org.au](mailto:eddie.ripard@ndp.org.au) or 02 8229 9710.



National  
Disability  
Practitioners